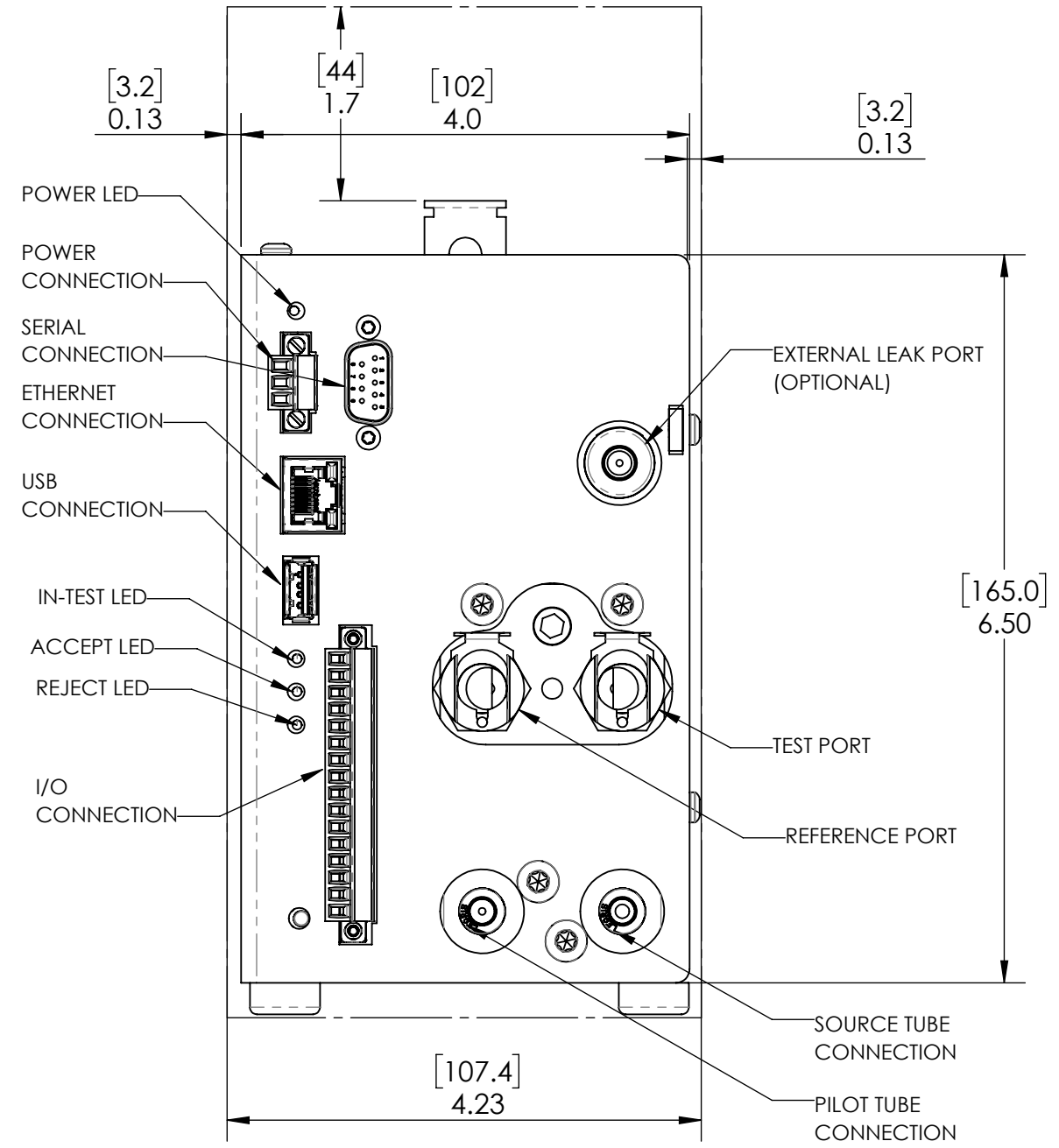
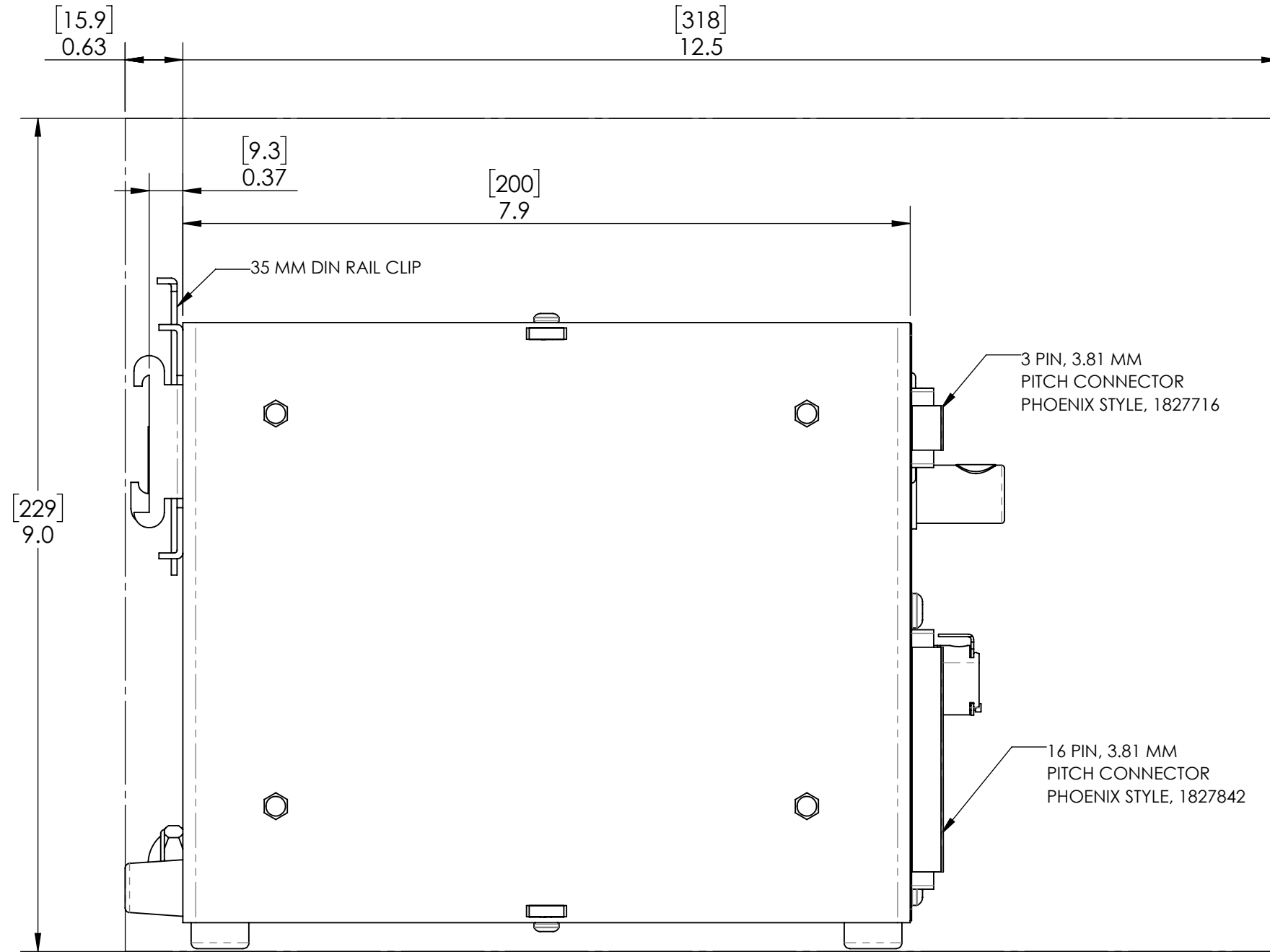



# MOUNTING AND CLEARANCE POSITION



NOTES:  
 1) 1/4" CPC TEST AND REF PORTS SHOWN. 6 MM PILOT AND SOURCE CONNECTIONS SHOWN  
 2) CLEARANCE ABOVE INSTRUMENT FOR HAND-MOUNT TO DIN RAIL

MATERIAL:		UNLESS OTHERWISE SPECIFIED BREAK ALL SHARP CORNERS		 <b>CINCINNATI TEST SYSTEMS</b>	
FINISH:		TOLERANCES: 1 PLACE DECIMAL ± .050" (1.27mm) 2 PLACE DECIMAL ± .010" (0.25mm) 3 PLACE DECIMAL ± .003" (0.08mm) ANGULAR DIMS ± 0° 30' ✓ INDICATES 125° 500 MAXIMUM FINISH REQ'D ON SURFACES WITHOUT A SYMBOL			
QUANTITY:	HEAT TREAT:	DRILLED AND COUNTERBORED HOLE DIAMETERS: -.005" / +.015" [-0.13mm / +0.4mm]		PART NUMBER MH INSTRUMENT	
MANUFACTURER:		SolidWorks		SIZE B	
JOB NUMBER:		DRAWN BY:		LEGACY PART NUMBER:	
		CHECKED BY:		DATE:	
				REV A	
				SCALE 1:1	
				SHEET 1 OF 1	